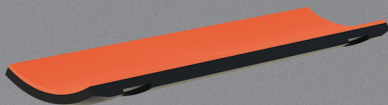


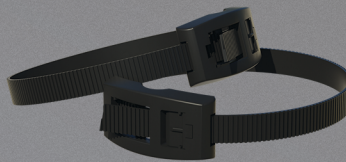


THE SMARTPAD SYSTEM

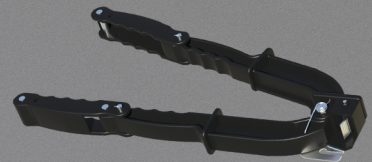
THE SYSTEM



SMARTPAD & GASKET



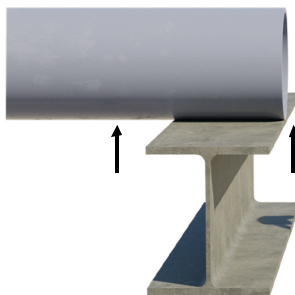
SMARTBANDS & BUCKLES



SMARTOOL

THE PROCESS

1



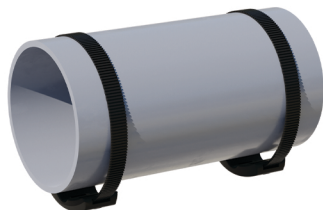
Follow your facility's standard operating procedure (SOP) to raise the pipe 1" to 2" above its support

2



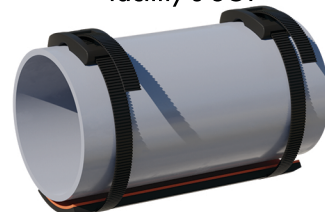
Clean and dry bottom side of pipe and treat for any existing corrosion per your facility's SOP

3



Place SmartBands around pipe above pipe support location

4



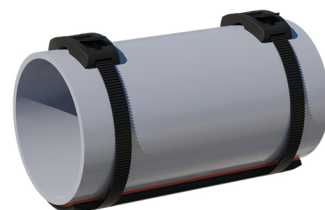
Insert SmartPad between pipe & SmartBands, aligning bands with pad's grooves

5



Tighten SmartBands using SmartTool Banding Tensioner

6



Cut off excess banding using SmartTool's built-in cutting tool



THE SMARTPAD SYSTEM

STEP BY STEP

STEP #1

Raise the Pipe: Follow your facility's standard operating procedure (SOP) to raise the pipe above its support. 1" to 2" should be sufficient.

STEP #2

Corrosion Inspection: If corrosion is present, address it according to your facility's SOPs. Note: SmartPad System is usable for pipes with previous corrosion treatment, including those with uneven surfaces.

STEP #3

Clean the Pipe: Use a wet towel to thoroughly clean the pipe, removing dirt and debris.

STEP #4

Dry the Pipe: Dry the pipe well using a dry towel or allow it to air-dry.

STEP #5

Loop SmartBands Around Pipe: Loop SmartBands around the pipe above the pipe support location, roughly aligning the bands with the location of the pads' grooves. Then, loosely attach the buckles.

STEP #6

Position the SmartPad: Insert SmartPad between pipe and SmartBands, aligning bands with pad's grooves.

STEP #7

Tension the Bands: Utilize the SmartTool to tension the bands securely, then cut off any excess band material with the tool's built-in blade.

STEP #8

Lower Pipe: Lower the pipe back to its original location according to your facility's SOPs.

ADDITIONAL NOTES

Prior to installing a SmartPad on an existing pipe, thoroughly review and comprehend your facility's SOPs related to pipe lifting and lowering. Additionally, assess whether any existing corrosion problems on the pipe are reparable and familiarize yourself with the associated treatment procedures.

No Additional Processes Needed: No epoxy, welding, or line shutdowns are required.

Removal: To remove a SmartPad, cut off each SmartBand per your facility's SOPs, then remove the SmartPad.

Reinstallation: Follow the same process as above, using the existing SmartPad and Hydroseal gasket, along with the same buckles, but replace the SmartBands with new ones.